

## DS Chip Advanced + Installation Instructions

### Kit contents:

- 1x DS Chip Advanced +
- 1 x roll of wires



### What you need:

- Tri-wing screwdriver
- Small Philips screwdriver
- Soldering iron
- Soldering flux (optional)

**Warning:** Mash-Mods does not take any responsibility in possible damages that may occur to your Nintendo DS during the DS Chip Advanced + installation. Perform the installation at your own risk. If you do not feel comfortable doing so, we will gladly install the chip for you.

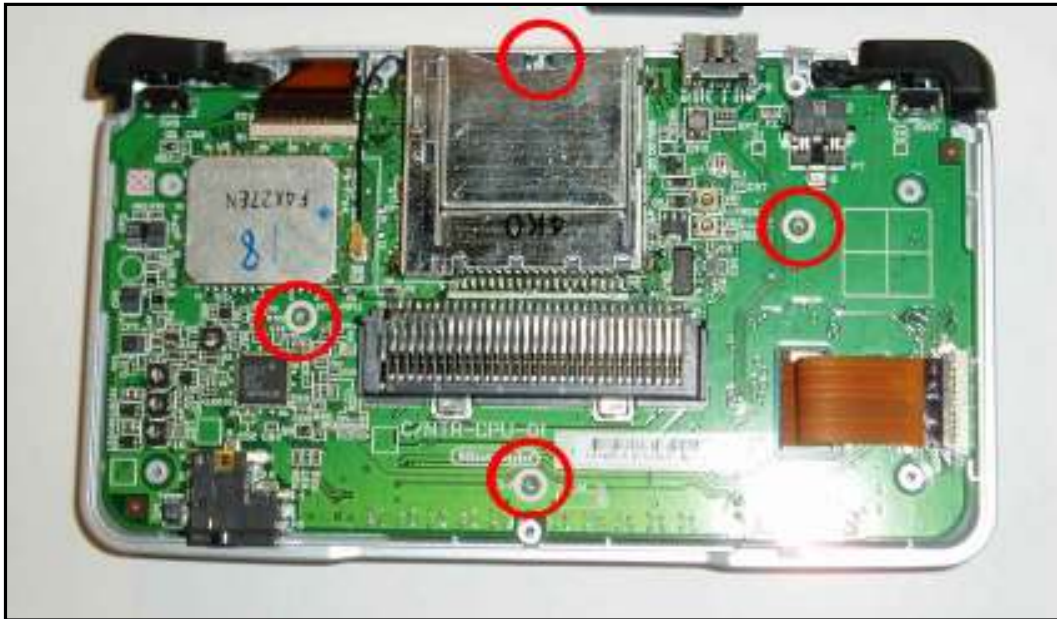
### Step 1:

Ok, it's time to turn your Nintendo DS into the ultimate GBA gaming machine! First step is disassembly. Remove the battery cover and battery using your Philips screwdriver. Then remove all the remaining Tri-wing screws holding the back plate of the system. The circles on the diagram below indicate the location of all the screws. Remember to also remove any cartridges, the wrist strap, and stylus.



## Step 2:

The back plate of the system should come off with some ease. If it's not giving, chances are you forgot to undo a screw! Now it's time to remove the shoulder buttons. Be careful, the shoulder button assembly has a small spring that can be easily lost if you rush this. Also take note of how the spring sits so you can re-assemble it later. Take your small Philips screwdriver and remove the 4 screws holding the main board to the shell.



## Step 3:

On the lower right of the system you will see the ribbon cables for the touch screen. This will have to be removed. Unclip the connector and remove the bigger cable, then unclip the following small ones underneath. To unclip the smaller connectors, you can use a small flat-head screwdriver to push the notches on the side. The cables should then come out with ease. The trick here is to be gentle.



#### **Step 4:**

With the 3 cables detached, flip the main board over so that the front of the board is exposed, leaving the folded shell (along with the touch screen) neatly together above. Note that there is still one ribbon cable and a small wire running from the main board to the upper screen, do not remove these, there is absolutely no need and it's an unnecessary risk to do so.

#### **Step 5:**

Now it's time for the fun part, chip installation! All of the twelve soldering leads are on the bottom of the chip. Put a sticker or a piece of electrical tape on the top side of the chip to insulate it from the DS board. Place, or stick the chip on the bottom right of the system as shown in the installation diagram. It's a good idea to solder the G and R leads first, as they are in close proximity to the chip.

#### **Step 6:**

Solder all the wires to the corresponding leads on the DS board as the installation diagram on the next page indicates. Cut your wires as short as possible to make the installation neat! Note that a larger image of the installation diagram can be found in the Nintendo DS section at <http://www.mash-mods.com>.

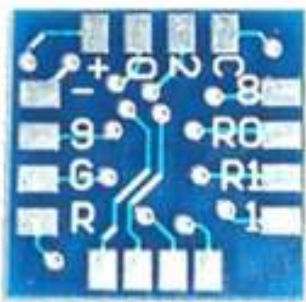
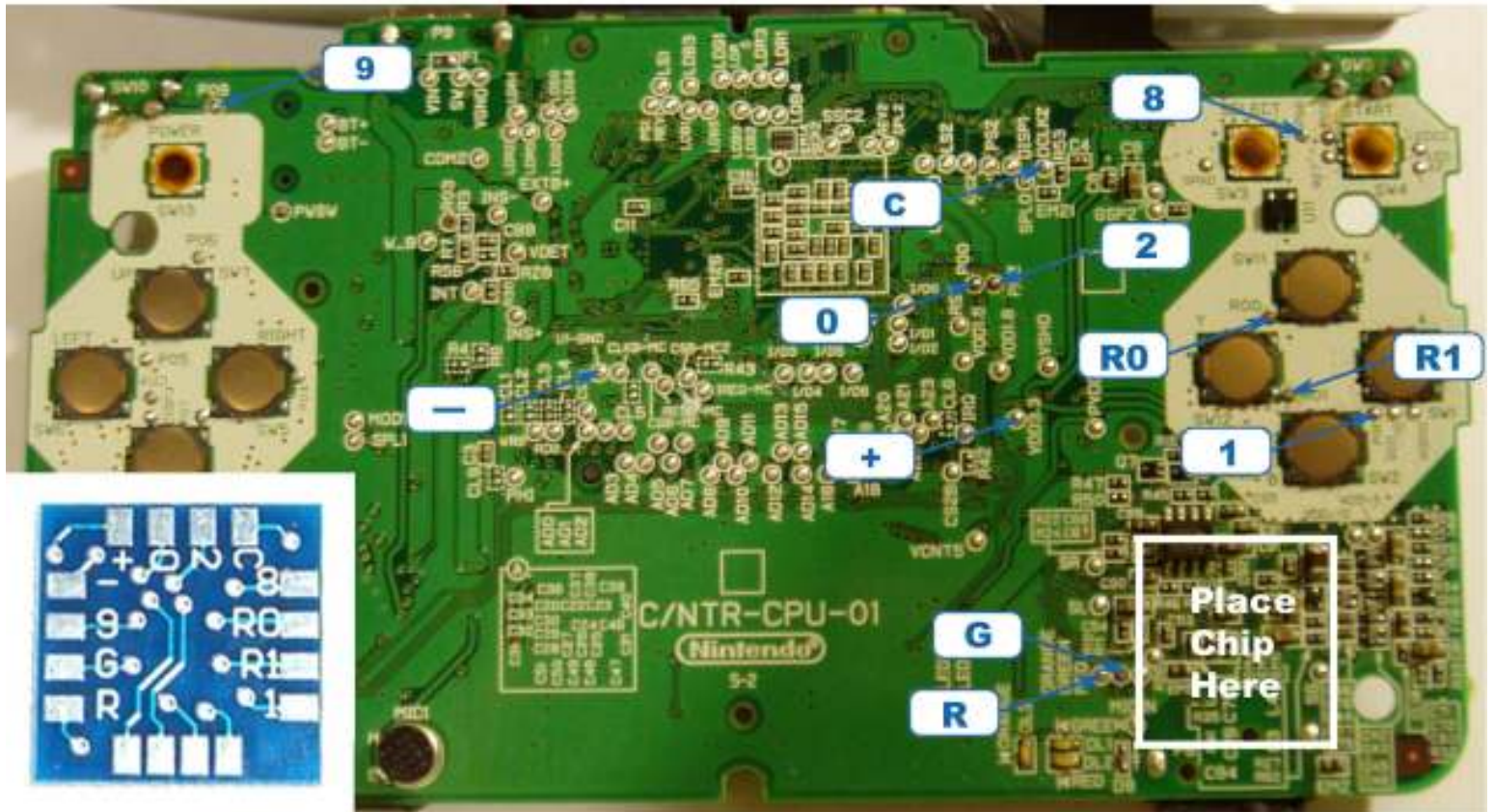


# DS Chip Advanced + Installation Diagram



info@mash-mods.com

www.mash-mods.com



## **Step 7: Chip operation**

### **Chip commands:**

Use these commands to toggle the different modes.

- Turn off/Reset: **SELECT + X + Y** (release SELECT, then release X + Y)
- Toggle X/Y non-turbo: **SELECT + X**
- Toggle X/Y turbo: **SELECT + Y**

### **Operating the chip:**

- 1) Turn the system on, and reset the chip (SELECT + X + Y).
- 2) Mode 1: To map X/Y to R/L, press SELECT + X.
- 3) Mode 2: Press SELECT + X again to map X/Y to A/B.
- 4) Mode 3: To map X/Y to Turbo A/Turbo B, press SELECT + Y.
- 5) Mode 4: Press SELECT + Y again to map X/Y to Turbo R/Turbo L.
- 6) Off: Press reset to turn chip off (SELECT + X + Y).

### **LED Indicator:**

Depending on the mode, the Green and Orange LEDs of the system will change. Here are their setting depending on the mode:

- Chip Off: Orange OFF, Green ON.
- Mode 1: Orange OFF, Green OFF.
- Mode 2: Orange OFF, Green OFF.
- Mode 3: Orange ON, Green OFF.
- Mode 4: Orange ON, Green ON.

### **Troubleshooting:**

Chip won't turn on or off:

- 1) Check that all the leads are soldered properly, and that the bottom part of the chip touching the Nintendo DS board is insulated. If a wire seems damaged, replace it!
- 2) Make sure there aren't any wires covering the buttons inside the system. This may cause blocking of the buttons and unresponsiveness.
- 3) If you are sure that the chip is properly connected, you may have received a mal-functional unit. Contact [info@mash-mods.com](mailto:info@mash-mods.com) for information on how to exchange your DS Chip Advanced +.

Sporadic function. The chip sometimes works, but then it doesn't respond.

- 1) This may happen, due to the switching nature of the circuit! NO PROBLEM!  
Simply press the chip off/reset command (**SELECT + X + Y**) and the chip should respond.

Chip works, but sometimes doesn't toggle between the modes.

- 1) Once again, due to the switching nature of the circuit, toggling between the modes might not always work first try, it usually should. There is nothing wrong with the chip, just try to toggle the mode again, or reset the chip and try again.