

SwanCrystal/WonderSwan front light kit installation guide

Kit Contents:

- 1x Light Guide Panel
- 1x set of black and blue wire
- 1x resistor
- 1x contrast dial (optional)
- 1x switch (not used)

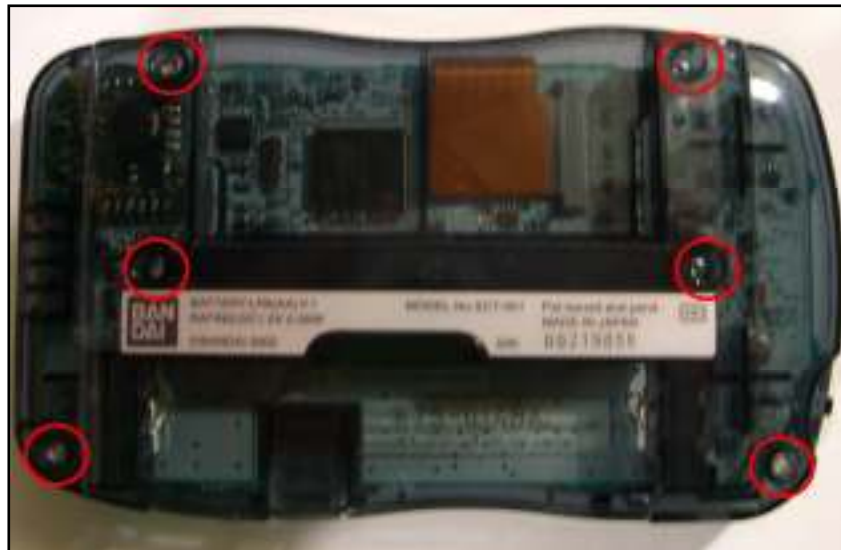
What you need:

- Small Tx-star screwdriver
- Soldering iron
- Adhesive (optional)



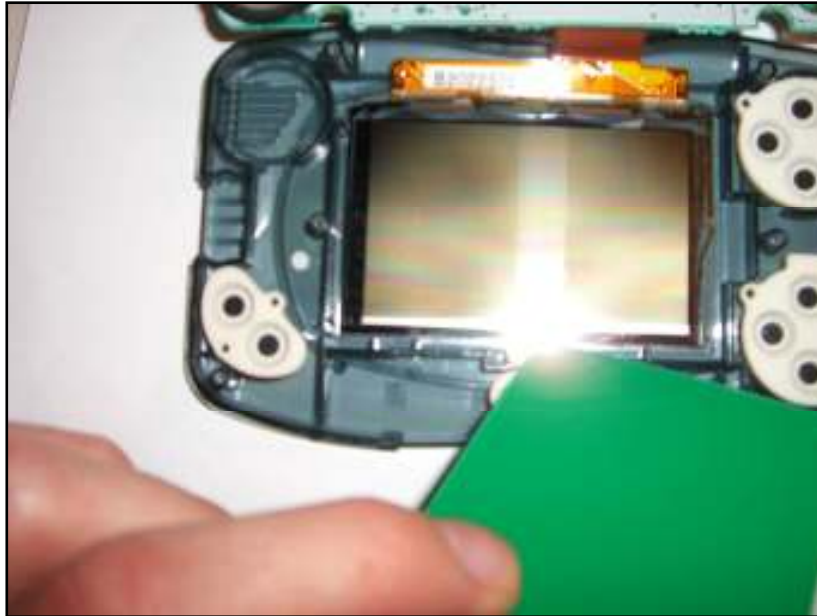
Step 1:

The first step is to remove the back plate of the system. Unscrew the six screws in the back of the system using a small star screwdriver; store the screws and the white battery lock piece in a safe location.



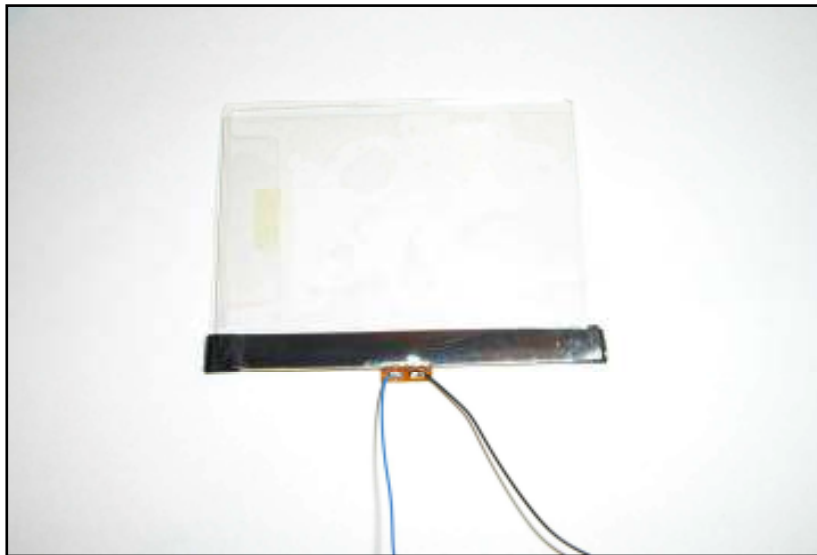
Step 2:

Using a piece of thin plastic, such as a credit card, gently pry the screen off the casing.



Step 3:

To make the light guide panel fit nicely, you will need to remove about 5mm off the top. Using a pair of scissors carefully cut 5 mm off the top while holding on to the base of the panel. Holding on to the base will ensure that no fingerprints or possible damage may come to the actual light guide plate. After the cut, solder the blue wire to the left lead of the panel and the black wire to the right lead as shown below.



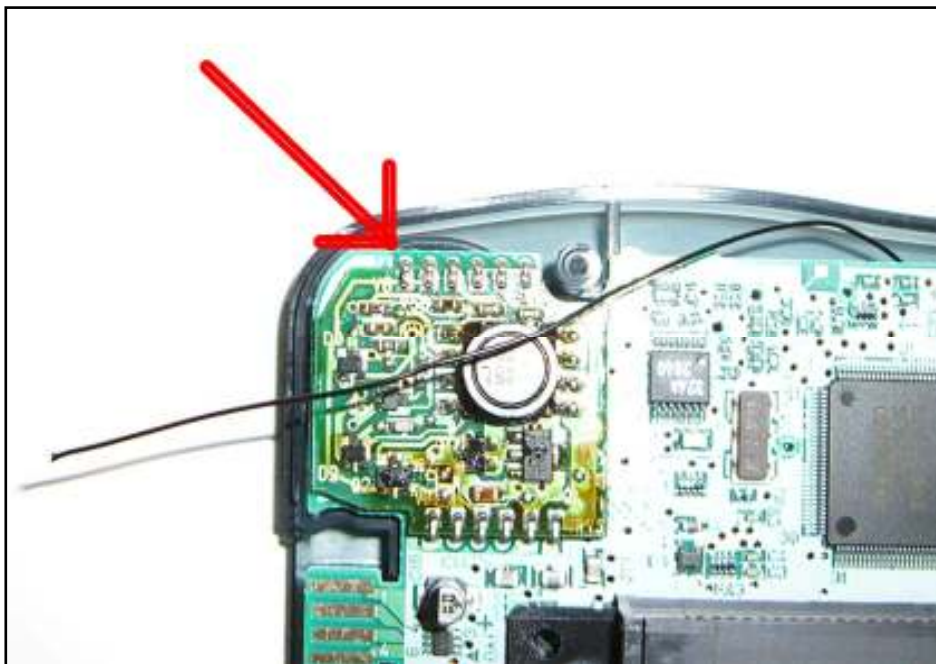
Step 4:

Making sure that the screen cover is free of dust particles, remove the protective layer off the light guide panel and place it on the system as indicated by the picture below. The light guide should be covering the entire screen's field of view.



Step 5:

After peeling the protective layer off of the light guide panel, carefully put the screen of the SwanCrystal back into position. Do this as quickly as possible to avoid any dust getting in the way. Solder one side of the resistor to the lead on the top left side of the circuit board, shown below.



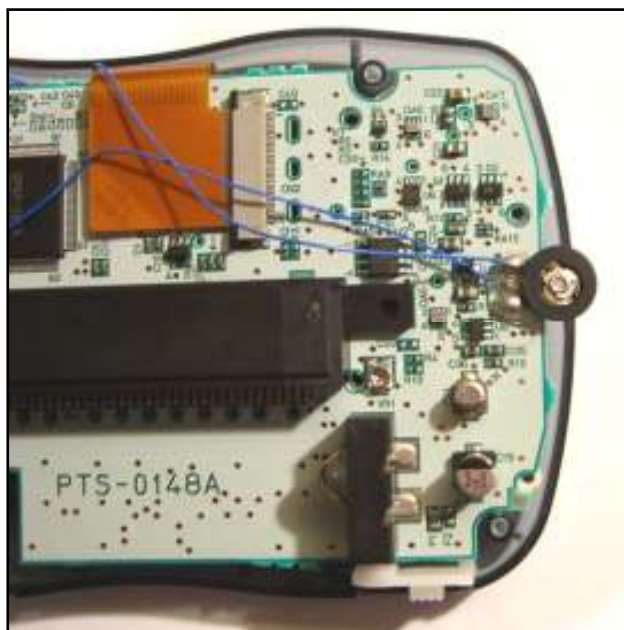


Step 6:

At this point you may choose to have the front light permanently on, or install a contrast dial to be able to adjust the brightness and turn the light off. To wire it permanently, solder the blue wire to the other end of the resistor.

Installing the contrast dial:

- Solder the blue wire from the front light to either the right or left pin of the dial.
- Solder a wire to the middle pin of the dial, and the other end of the resistor.
- Using adhesive (such as hot glue), glue the dial on the right edge of the board.
- Using a cutting tool or file, shape a hole on the back plate of the system to accommodate the contrast dial.





Step 7:

Almost done! Place the plastic battery notch back into position, the back plate, and close the system back up. If you installed the contrast dial, make sure that it can rotate smoothly. If not, increase the hole size so that it doesn't make any contact with the dial. Turn your system on and play in the dark!

