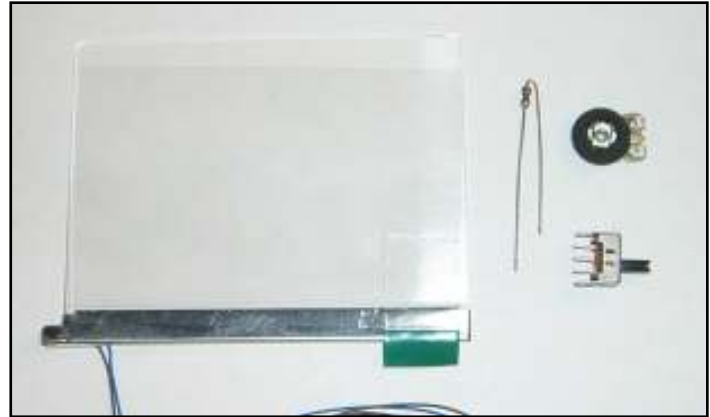


## SwanCrystal/WSC front light kit 2 installation guide

### Kit Contents:

- 1x Light Guide Panel
- 1x set of black and blue pre-soldered wires
- 1x resistor
- 1x contrast dial (optional)
- 1x switch (not used)

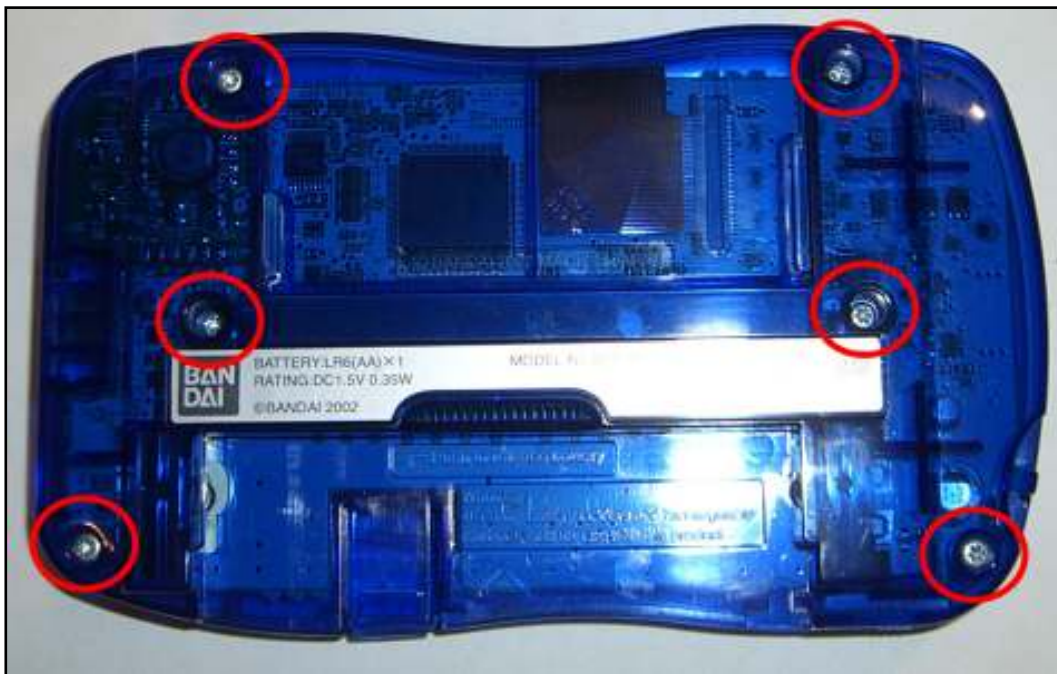


### What you need:

- Small Tx-star screwdriver
- Cutting tool
- Soldering iron
- Adhesive (optional)

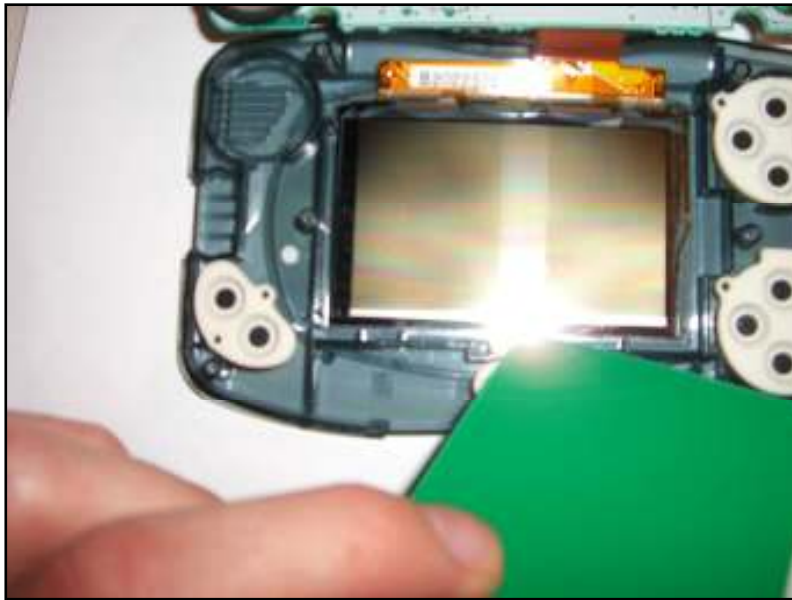
### Step 1:

The first step is to remove the back plate of the system. Using a small tx-star screwdriver, unscrew the 6 screws on the back of the system. Remove the plate then store the screws and the small white battery lock plate in a safe spot.



**Step 2:**

Using a piece of thin plastic, such as a credit, gently pry the LCD screen off the casing.



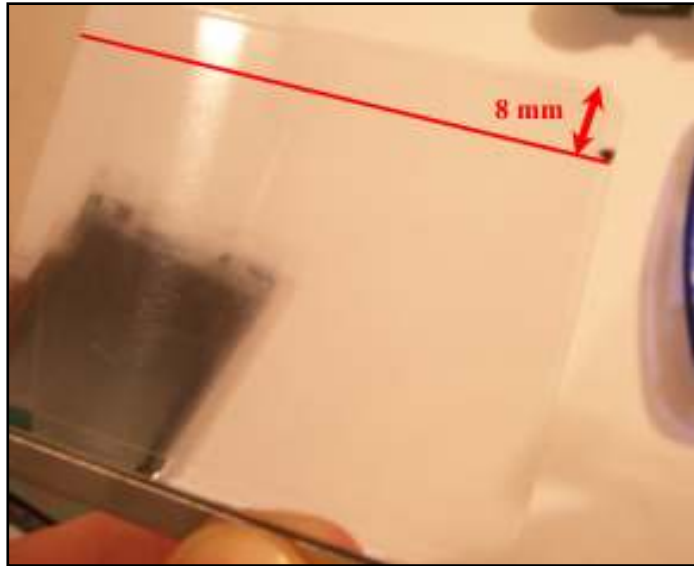
**Step 3:**

Now we're ready to install the light guide panel. Note from the picture below that the light guide plate is actually too tall to fit properly in the SwanCrystal... for now!



**Step 4:**

Using a marker, lightly mark about 8mm off the top of the light guide panel. With a pair of household scissors simply cut right across the top of the light guide plate. Don't worry if it crackles a bit, this is normal. Nevertheless, **be gentle** and hold the front light by the **silver base**. Holding it by the base will ensure no fingerprints or damage to the light guide panel.



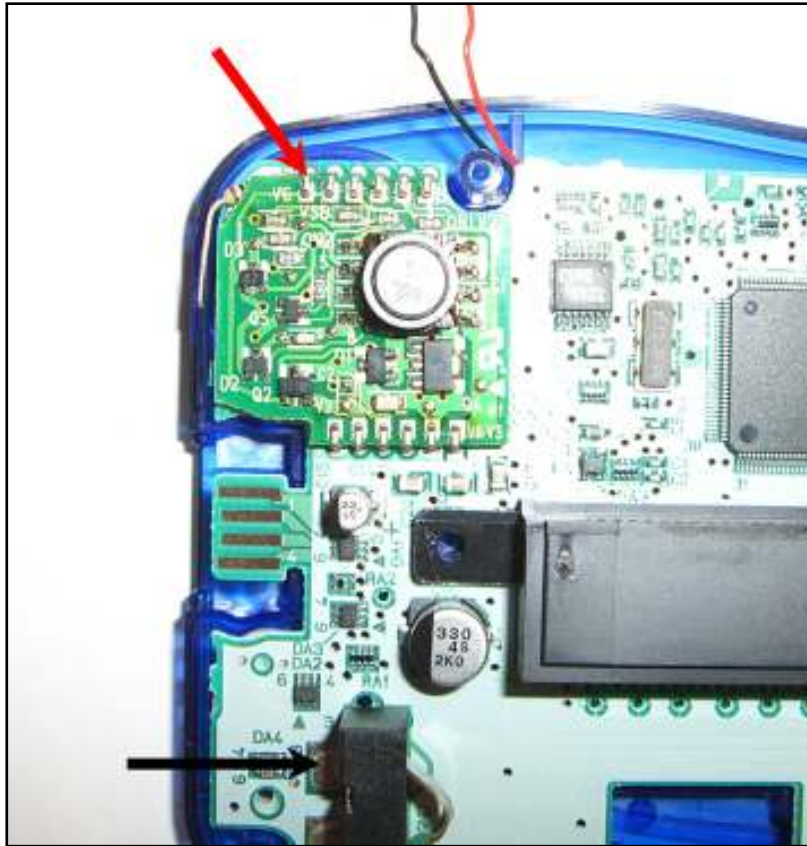
**Step 5:**

Making sure the screen cover is free of dust particles, peel the protective layer off one side of the light guide panel and fit it in the system according to the picture below. Make sure the panel is oriented as shown below as which side faces the LCD is important.



### Step 6:

Now peel the protective layer off the exposed side of the screen and **carefully** place the SwanCrystal LCD and motherboard back into place. Make sure you are careful aligning the LCD screen so it does not scratch the front light. Now it's time to wire the light up! Solder one end of the resistor to the top left hand soldering point on the SwanCrystal, as shown below. Solder the resistor to the point indicated by the **red** arrow; solder the black wire coming from the front light to the point indicated by the **black** arrow.

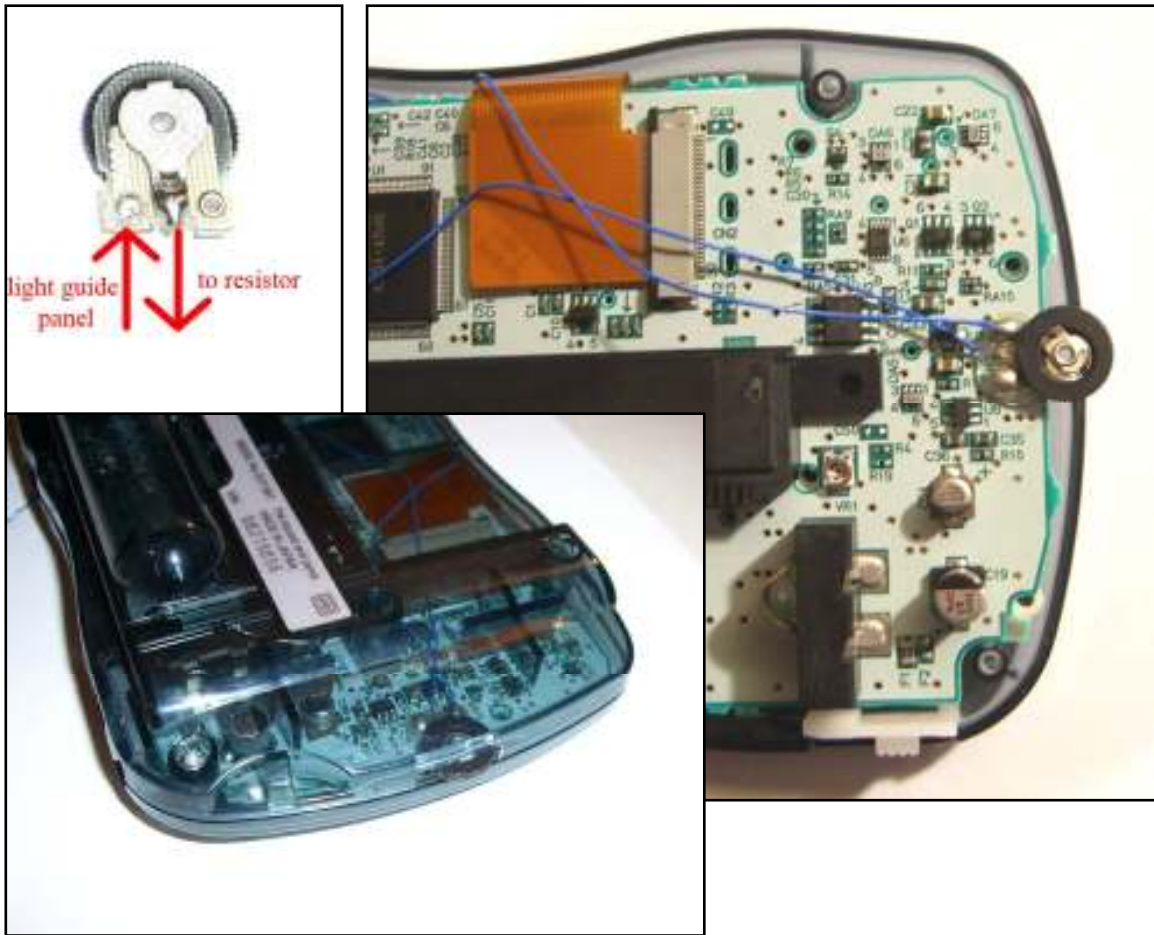


### Step 7:

At this point you may choose to have the front light permanently on, or install the contrast dial (recommended). To have the light permanently on, solder the **blue** wire from the front light to the other end of the resistor.

#### **To install contrast dial:**

- Solder the blue wire from the front light panel to either the left or right pin of the contrast dial.
- Solder a wire between the middle pin of the dial and the other end of the resistor, the part not connected to the board.
- Using adhesive (such as got glue), glue the dial onto the right edge of the board.
- Using a cutting tool or file, shape a hole on the back plate of the system to accommodate the contrast dial.



### **Step 8:**

Almost done! Place the battery notch back into position, then the black plate, and then close the system up. If you installed the contrast dial, make sure that it can rotate smoothly. If not, increase the hole size so it doesn't make any contact with the dial. Turn on your system and play in the dark!

